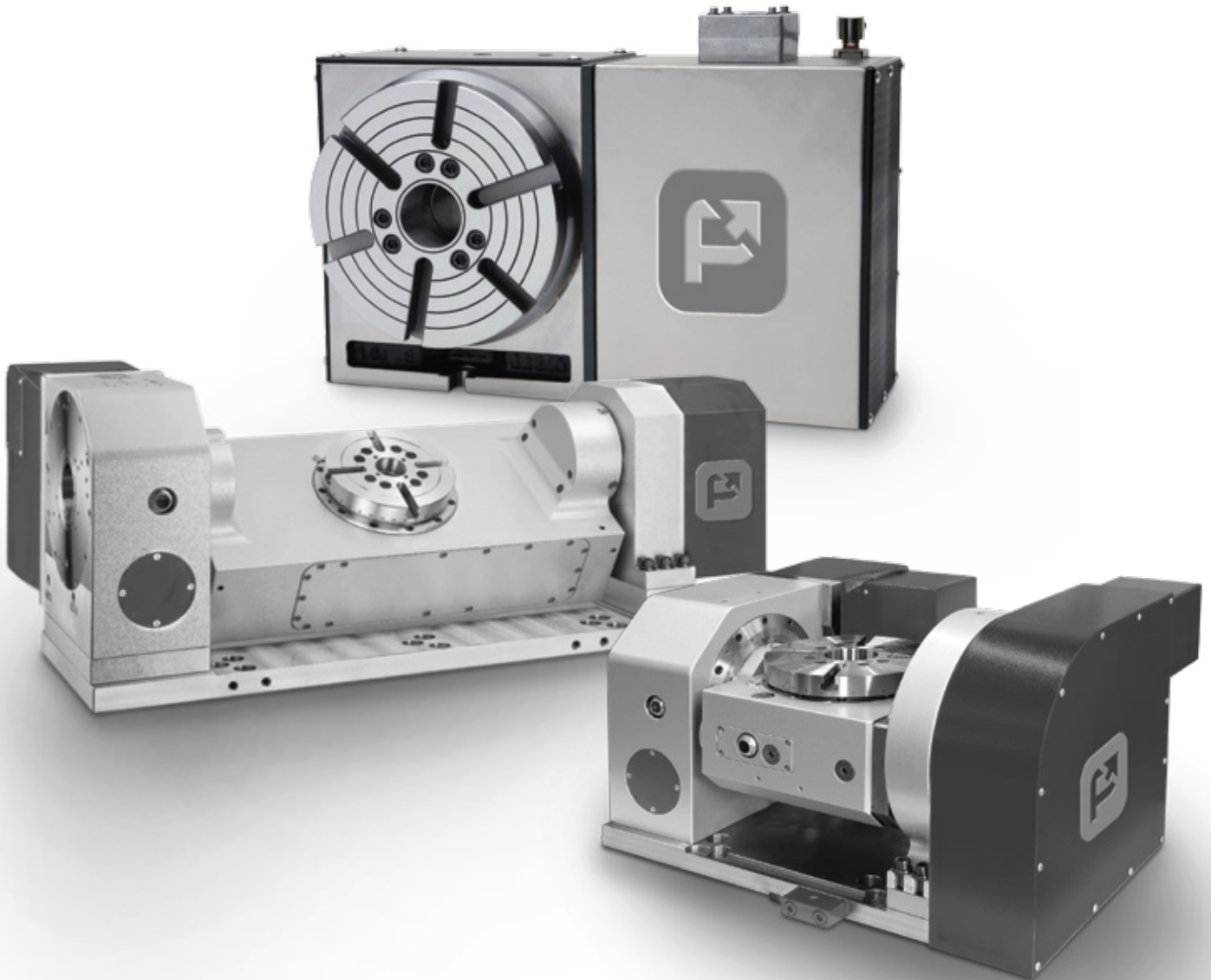


UNLOCK PRECISION, ELEVATE PRODUCTIVITY

With Advanced Rotary Tables

PRC & PTR Series





TAILORED SOLUTION FOR EVERY COMPONENT

Performance Rotary Series

The Performance series high-precision rotary products bring forth formidable 4th- and 5th-axis capabilities, elevating shop productivity with their affordable and straightforward plug-and-play design.

Each rotary product within the Performance Series is specifically crafted to seamlessly integrate with Vertical Machining Centers (VMCs) and is equipped with the latest generation servomotors to deliver optimal performance.

ROTARY SPECIFICATION

PRC Series

The PRC Series T-slotted rotary tables are ideal for securing medium to large parts or fixtures. These sturdy tables, with six precision T-slots, offer versatility as they can be mounted vertically or horizontally. The large through-holes accommodate bar feeding and special fixture-locating needs, providing a robust solution.

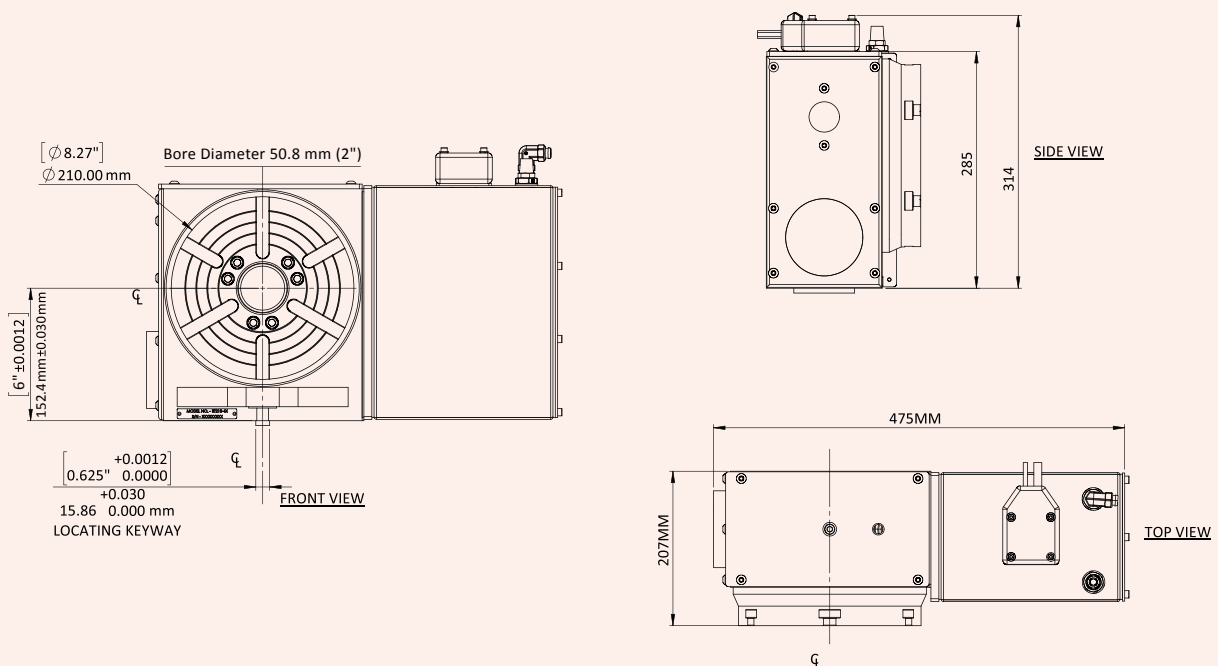
PRC210



Key Highlights:

- Add 4-axis capabilities to your machine
- Easy plug-and-play connection
- Industry-leading performance and capabilities
- Heavy-duty design
- Roller Cam structure, No Backlash, high accuracy and efficiency

Rotary Layout



ROTARY SPECIFICATION

Platter	Unit	Metric
Bore Diameter	mm	50.8
Platter Diameter	mm	210
Max Weight on Platter (Vertical)	Kg	90
Max Weight on Platter (Horizontal)	Kg	180
Number of Std T-Slots	Numbers	6
Spindle	Unit	Metric
Max Speed	°/sec	180
Max Torque	Nm	257
Runout Max	mm	0.013
Center Height	mm	152.4
Backlash	arc-sec	30
Brake Torque @ 100 psi/6.9 bar	Nm	340
Gear Ratio		50:1
Brake		Hydro Pneumatic
Indexing	Unit	Metric
Accuracy (±)	arc-sec	± 20
Repeatability	arc-sec	± 4
Max Rotation/Step (with rotary control)		999.999 °
General	Unit	Metric
Power Requirement		115 VAC ± 10% @ 15 A
Operating Temp (max ambient)	°C	38
Air Requirements	Unit	Metric
Air Pressure Max	bar	10.3
Dimensions - Shipping	Unit	Metric
Export Crate	cm	69 x 54 x 54
Weight	Kg	85

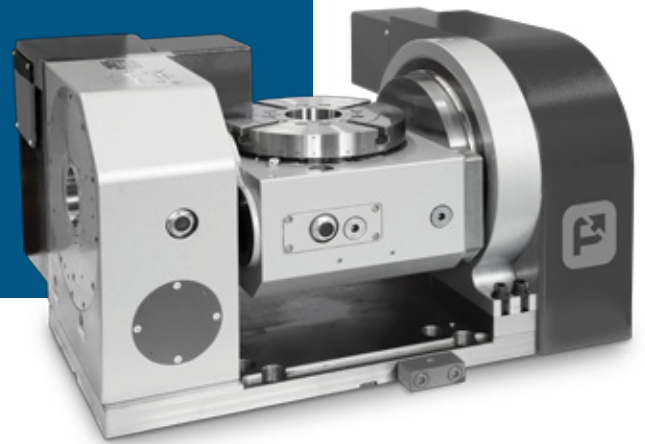
Technical specifications and optional items may be subject to change without prior notice.

ROTARY SPECIFICATION

PTR Series CNC Tilting Rotary Table

Five-axis machining is the quickest way to streamline setups, increase throughput, and enhance accuracy for complex parts. The Performance Series dual-axis rotary tables simplify 5-axis machining, minimizing or eliminating multiple setups and facilitating the handling of multi-sided part.

PTR125Y

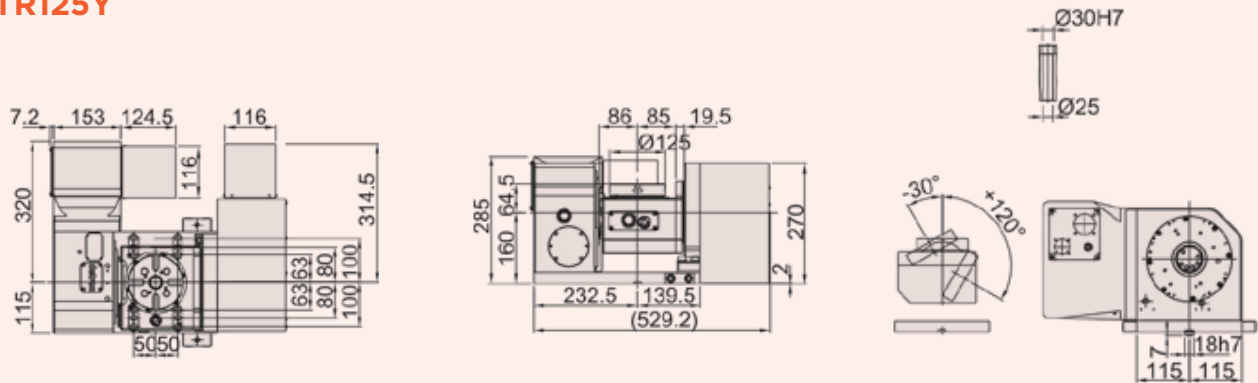


Key Highlights:

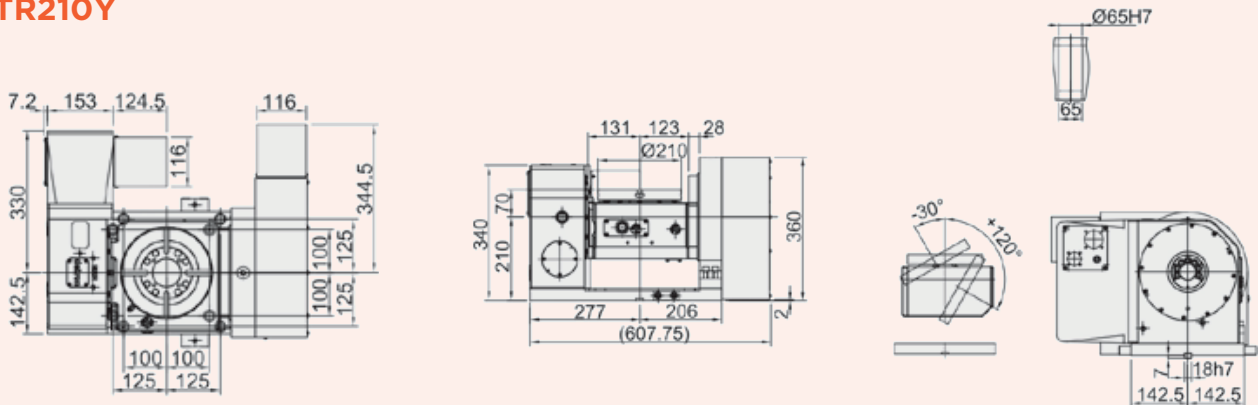
- Worktable diameter $\varnothing 125$, $\varnothing 210$
- Enlarged the high precision cross roller bearing
- Transmitted by dual lead worm with high efficiency and full depth gear teeth

Rotary Layout

PTR125Y



PTR210Y



ROTARY SPECIFICATION

MODEL	Unit	PTR125Y	PTR210Y
Worktable Diameter	mm/inch	Ø125 / 4.92	Ø210 / 8.27
Center bore Diameter	mm/inch	Ø30H7 / 1.18H7	Ø65H7 / 2.56H7
Hight of Table (horizontal)	mm/inch	224.5 / 8.84	280 / 11.02
Height of Center (vertical)	mm/inch	160/6.30	210/8.27
Width of T-slot	mm/inch	12H7/0.47H7	12H7/0.47H7
Width of guide block	mm/inch	18/0.71	18/0.71
Clamping/Method/Pressure	Mpa/Ps	pneumatic 0.55~0.7 / 79.8-101.5	pneumatic 0.55~0.7 / 79.8-101.5
Transmission Ratio		R T 1:90 1:90	R T 1:90 1:90
Max. table speed	rpm	44.4 44.4	33.3 22.2
Allowable Loading Capacity [In Horizontal, In tilting (0-90°)]	Kg/lb Kg/lb	50/110 35/77	100/220 70/154
Allowable unblancing work moment (WxL)	Nm/ft/lbs	24/17.69	62/45.7
Allowable Load (when table Clamped) (F, FXL, FXL)	N/lbs Nm/ft/Lbs Nm/ft/lbs	4000/897.60 140/103.2 300/221.1	14000/3141.6 400/294.7 600/442
Allowable Loading Inertia $\frac{(W.D^2)}{8}$	kg.m2	0.1	0.55
Resolution	deg	0.001	0.001
Indexing accuracy	Arc Sec	40 60	20 60
Repeatability	Arc Sec	6 8	6 8
Tilting angle Range	deg	-30 ~ +120	-30 ~ +120
Net weight (servo motor excluded)	Kg/lb	120/264	230/490/6
Allowable Cutting Torque	Nm/ft/Lbs	85/62.65	250/184/25

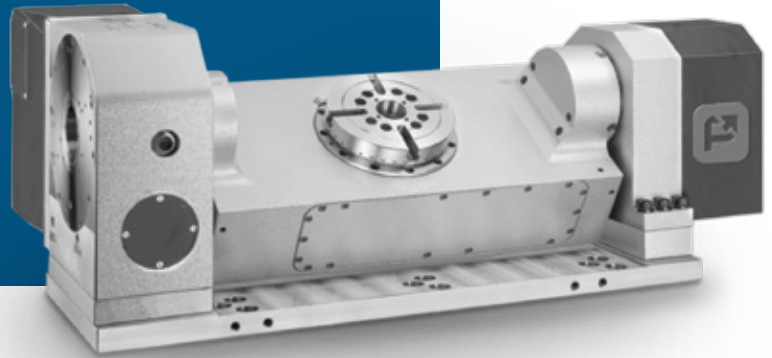
Technical specifications and optional items may be subject to change without prior notice.

ROTARY SPECIFICATION

PTR - X Series CNC Tilting Rotary Table

The performance series tilting rotary table provides optimal rigidity and precise performance for machining medium to large parts in both 3+2 and full 5-axis operations. The inclusion of Scale feedback on the tilting axis enhances positioning accuracy and repeatability.

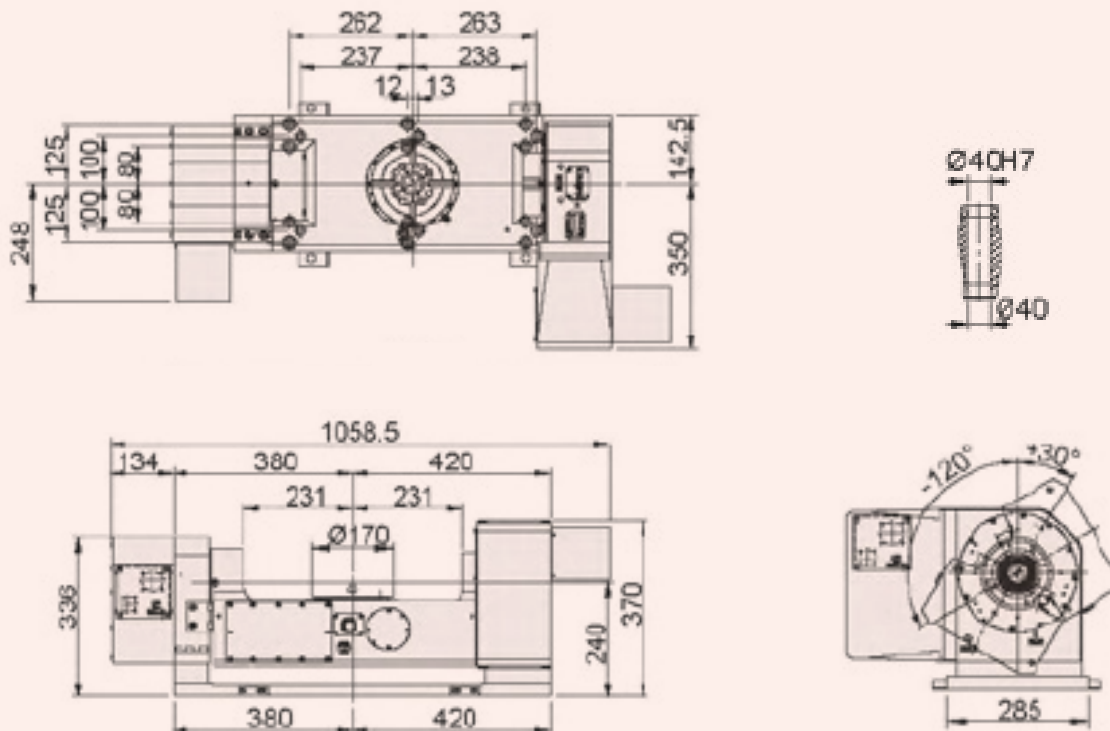
PTR170X



Key Highlights:

- Workable Diameter $\varnothing 170$
- The hydraulic brake equipped with radial & axial bearings
- Full gear depth transmitted by dual lead worm drive resulting in higher efficiency & lower backlash
- Enlarged swing to allow more working envelope

Rotary Layout



ROTARY SPECIFICATION

MODEL	Unit	PTR170X	
Worktable Diameter	mm/inch	Ø170/6.69	
Central bore Diameter	mm/inch	Ø40H7/1.57H7	
Hight of Table (horizontal)	mm/inch	240/9.45	
Height of Center (vertical)	mm/inch	240/9.45	
Width of T-slot	mm/inch	12H7/0.47H7	
Clamping/Method/Pressure	Mpa/Ps	pneumatic P: 0.55-0.7 / 72.5-101.5	
Transmission Ratio		R	T
		1/90	1/90
Max. table speed	rpm	22.2	22.2
Allowable Loading Capacity [In Horizontal, In tilting (0-900)]	Kg/lb Kg/lb	75/165 50/110	
Allowable unblancing work moment (WxL)	Nm/ft/lbs	40/29.5	
Allowable Load (when table Clamped) (F, FXL, FXL)	N/lbs Nm/ft/Lbs Nm/ft/lbs	7000/1570.8 300/221 400/294.7	
Allowable Loading Inertia $\frac{(W.D^2)}{8}$	kg.m2	0.28	
Resolution	deg	0.001	
Indexing accuracy	Arc Sec	20	60
Repeatability	Arc Sec	6	8
Tilting angle Range	deg	-120 ~ + 30	
Net weight (servo motor excluded)	Kg/lb	275/606.3	
Allowable Cutting Torque	Nm/ft/Lbs	200/147.4	

Technical specifications and optional items may be subject to change without prior notice.

