

ACCELERON MOBILE COBOTS

Enhancing Flexibility
and Efficiency



Empower your workspace with our cobots that automate nearly any task, freeing you to excel at what truly matters: creating, collaborating, and achieving greatness.



Intelligent- Precise-Versatile

Acceleron Mobile Cobot is a high-end industrial collaborative robot that integrates autonomous driving technology and Industry 4.0 standards. With advanced environment mapping, autonomous path planning, intelligent obstacle avoidance, environment and object recognition, as well as voice control technology, Acceleron Mobile Cobot can easily complete various tasks, including object handling, grasping, assembly, machine tending, etc. This robot is widely used in flexible Smart Manufacturing, Lab Testing, Inspection, Material Sorting and other scenarios, helping enterprises improve production efficiency and achieve intelligent transformation and upgrading.

Precise

$\pm 0.02\text{mm}$

Highest Repeat
Positioning Accuracy

$\pm 0.13\text{mm}$

3D Vision Spatial
Compensation Accuracy

Original Factory Integration, Complete Technology Independence

Mobile base and arm, visual sensors are all developed by Li-Gong, using the same controller for control, different from other integrated assemblies and multiple controllers, achieving seamless connection and high integration.



ACCELERON
Mobile Cobot **530**

ACCELERON
Mobile Cobot **520**

ACCELERON
Mobile Cobot **210**

ACCELERON
Mobile Cobot **205**

Extensive Application Scenarios



Loading & Unloading



Material Handling



Palletizing



Assembly

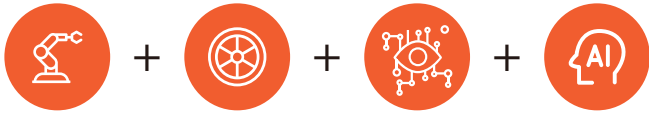


Experimental Operation

Intelligent

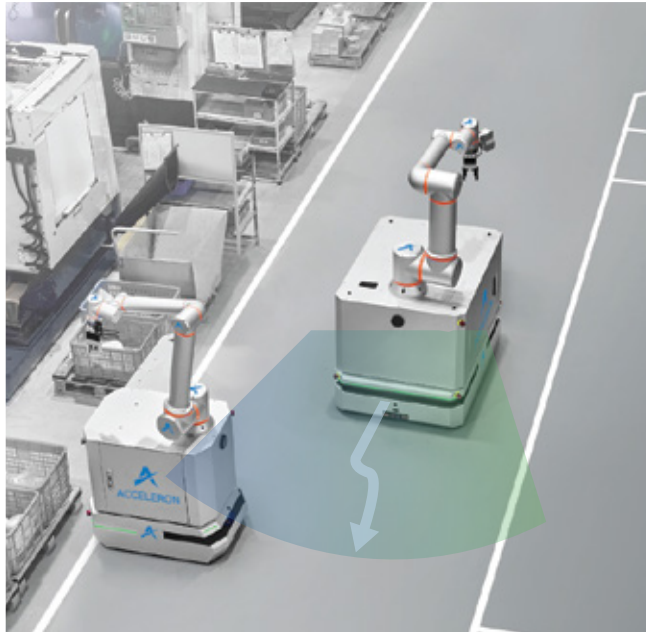
TOS Operating System

Integrates the original four independent modules into one harmonized controlling system.
Hand (robotic arm), Foot (AMR), Eye (vision), Brain (AI)



Data Interconnection with other production equipments

Resolve the problem of data/information isolation



Autonomous Navigation

Actively avoiding obstacles and optimize path planning in real time

Easy



3 steps to add a new task

- Create Map
- Mark Points
- Add to Mission Queue

5 minutes to create a complex job

2 sets of logical judgement + 8 actions

30 minutes to master operation

Hand-base Collaboration Graphical Programming

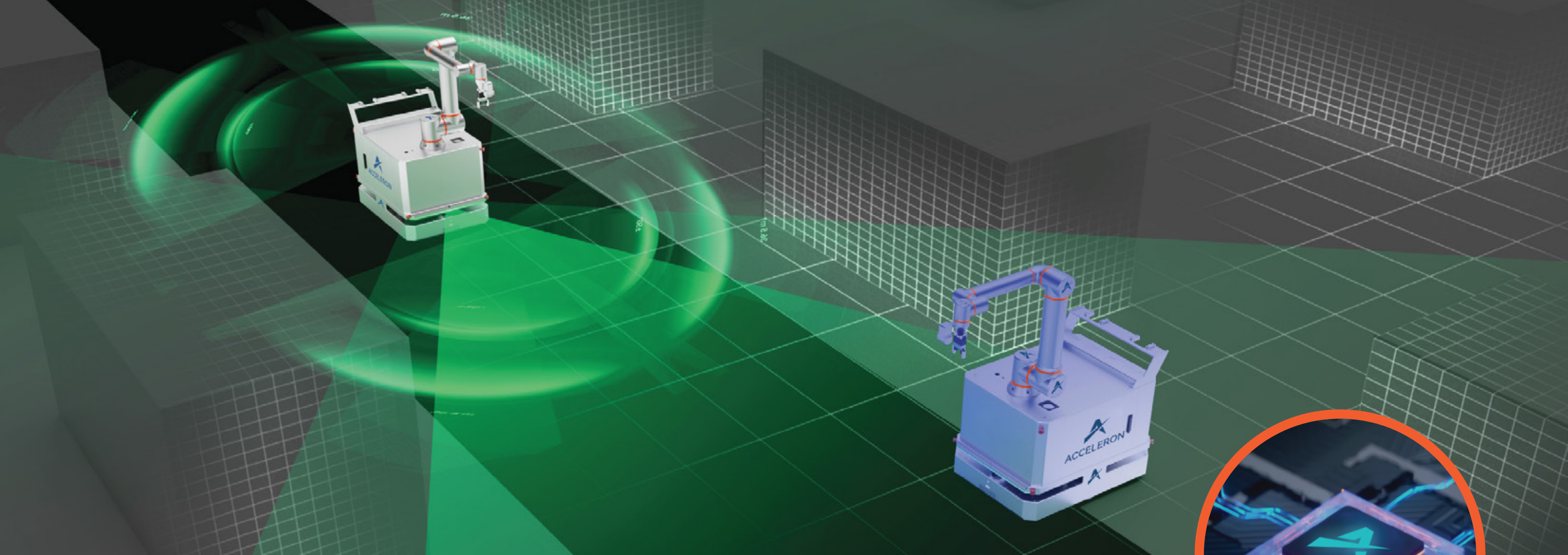
0-code graphical construction tasks

Users can quickly create and adjust the program and tasks of the robot arm and base without writing code, reducing the learning difficulty and improving the efficiency of use.



Voice Commands Remote Control

Cross-space, remote voice control, understanding natural language, and executing tasks through voice commands.



Safe

Human-Robot collaboration Safe and Controllable

Passed TÜV and SGS safety certification, ensuring the safety and stability of the robot

Convenient

Various Interfaces Strong Extensibility

Provide multiple IO interfaces and various communication protocols, making it easy for developers to quickly develop customized applications to meet various operation needs.

Seamless Battery Replacement Continuous Endurance

After choosing the battery kit, Acceleron Mobile Cobot can replace the battery without powering off and hot starting, improving the robot's work efficiency





ACCELERON COBOT Collaborative robot

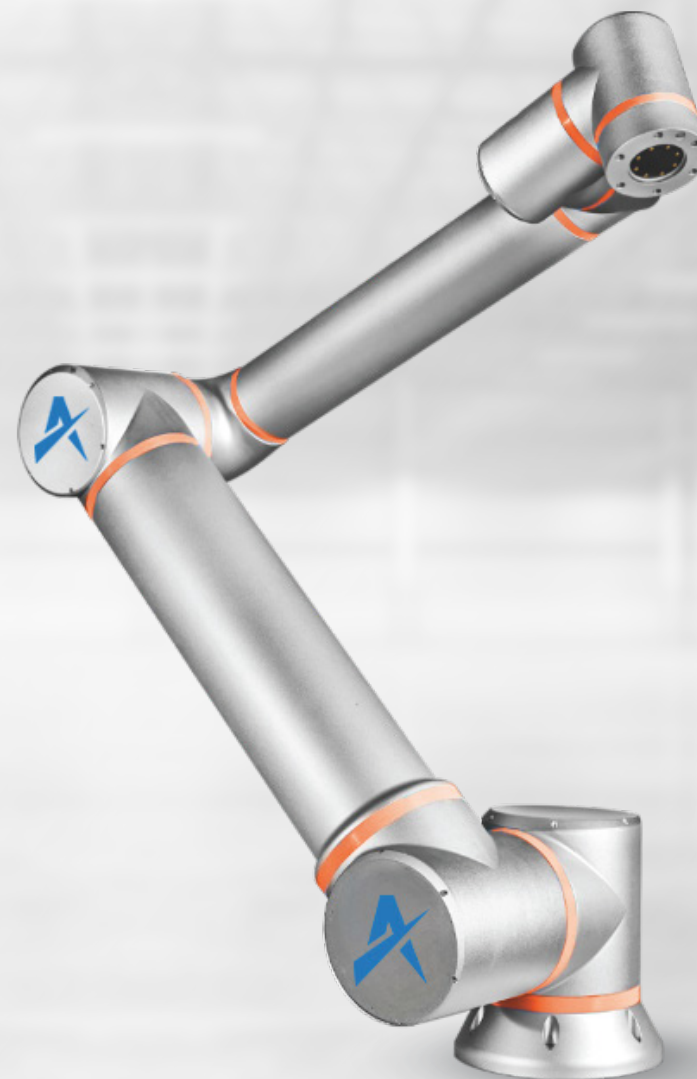
Acceleron Collaborative robot is a kind of collaborative industrial robot which can be widely used in machine tool loading and unloading, assembly, stacking, handling, welding and other applications. It has different load capacities of **5~32kg** and the working radius can reach **1600mm**. It is an ideal tool to help manufacturing users reduce costs and increase efficiency.



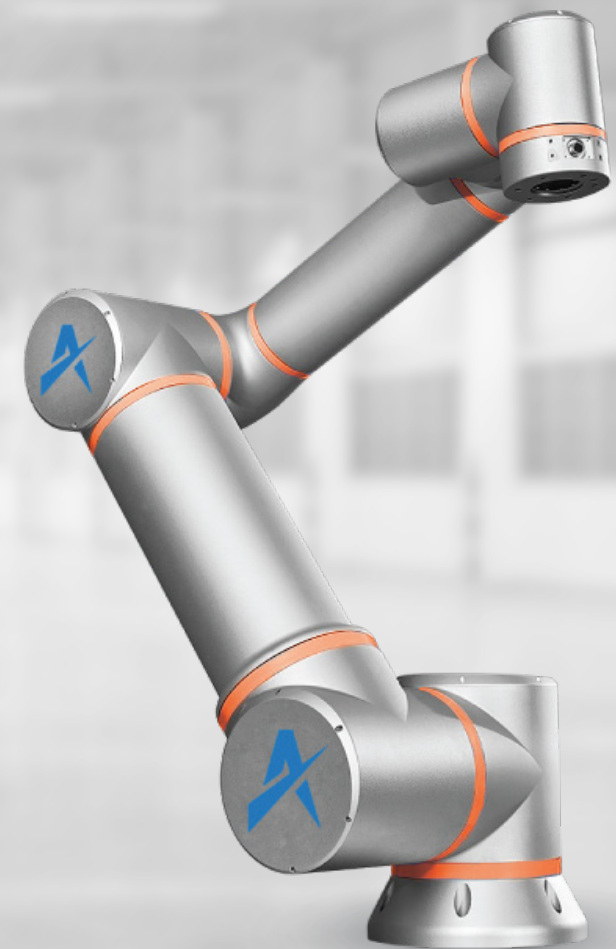
ACCELERON
Cobot **5Kg**



ACCELERON
Cobot **10Kg**



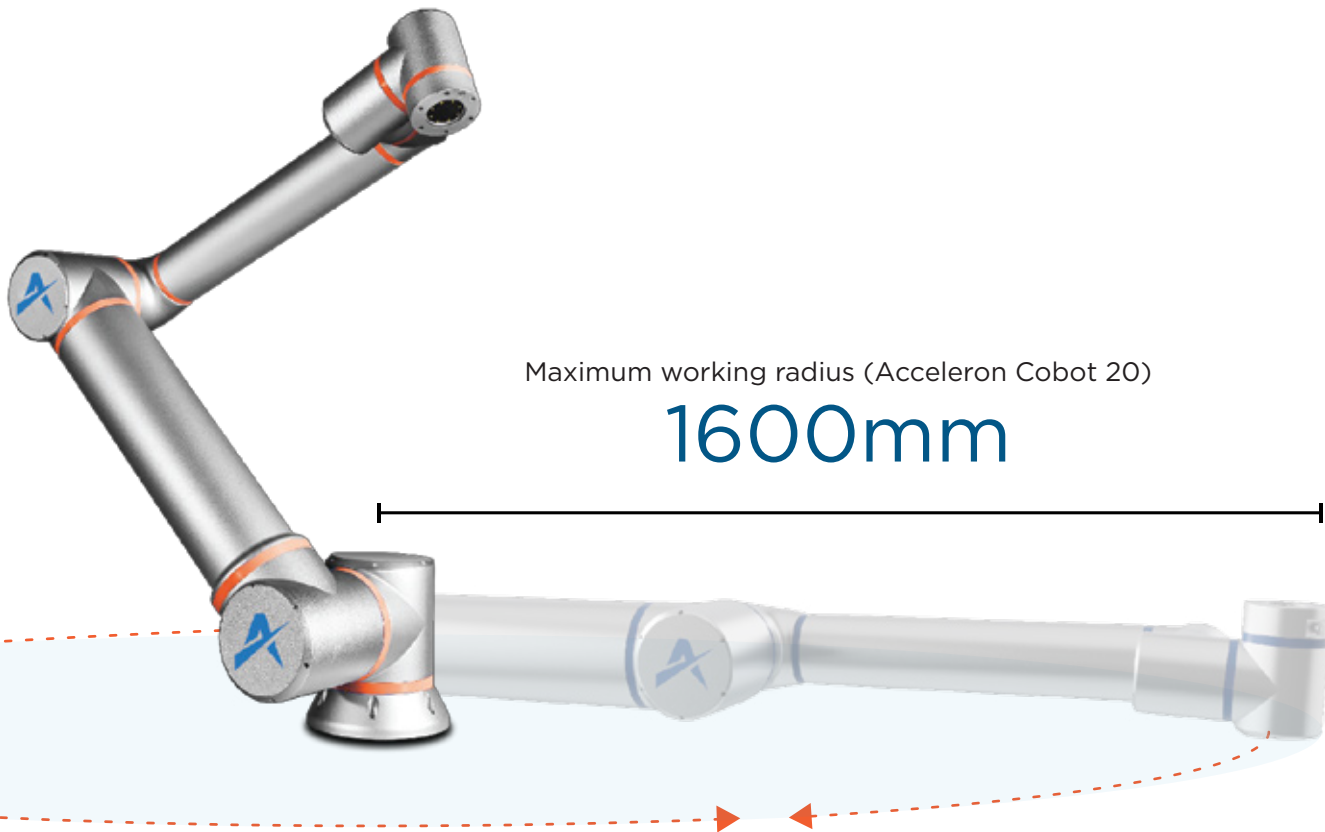
ACCELERON
Cobot **20Kg**



ACCELERON
Cobot **32Kg**

Safe & Reliable

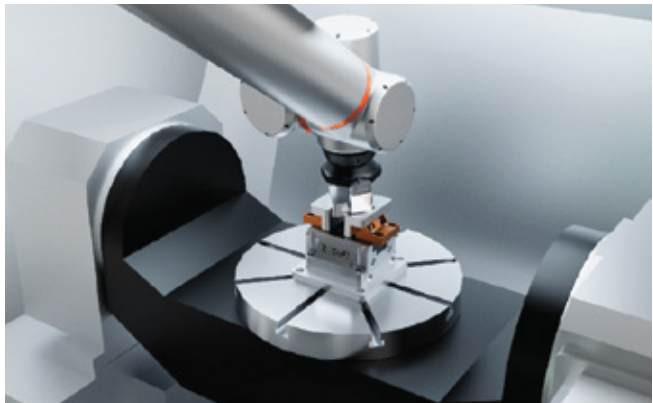
The product has passed EN ISO 13849-1 2015(PL = d, CAT 3) and EU CE certification, and supports level 10 collision detection and sensor safety detection without safety protection.



High Protection Requirements



Accurate & Stable



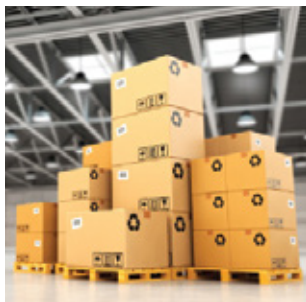
Repeated positioning accuracy can reach $\pm 0.02\text{mm}$ Can work continuously and with high precision for a long time

Easy to Use



0 code programming, full graphical interaction

Widely Used



Stacking



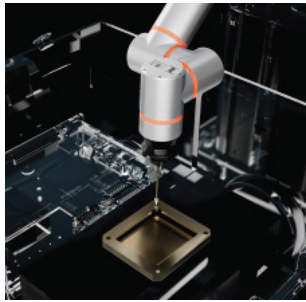
Loading & Unloading



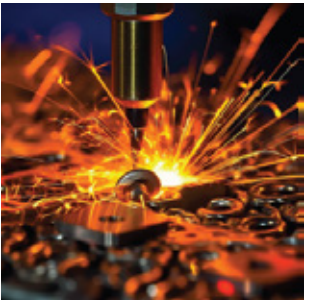
Polishing



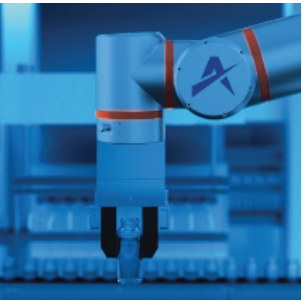
Painting



Assembly



Welding



Experimental Operation



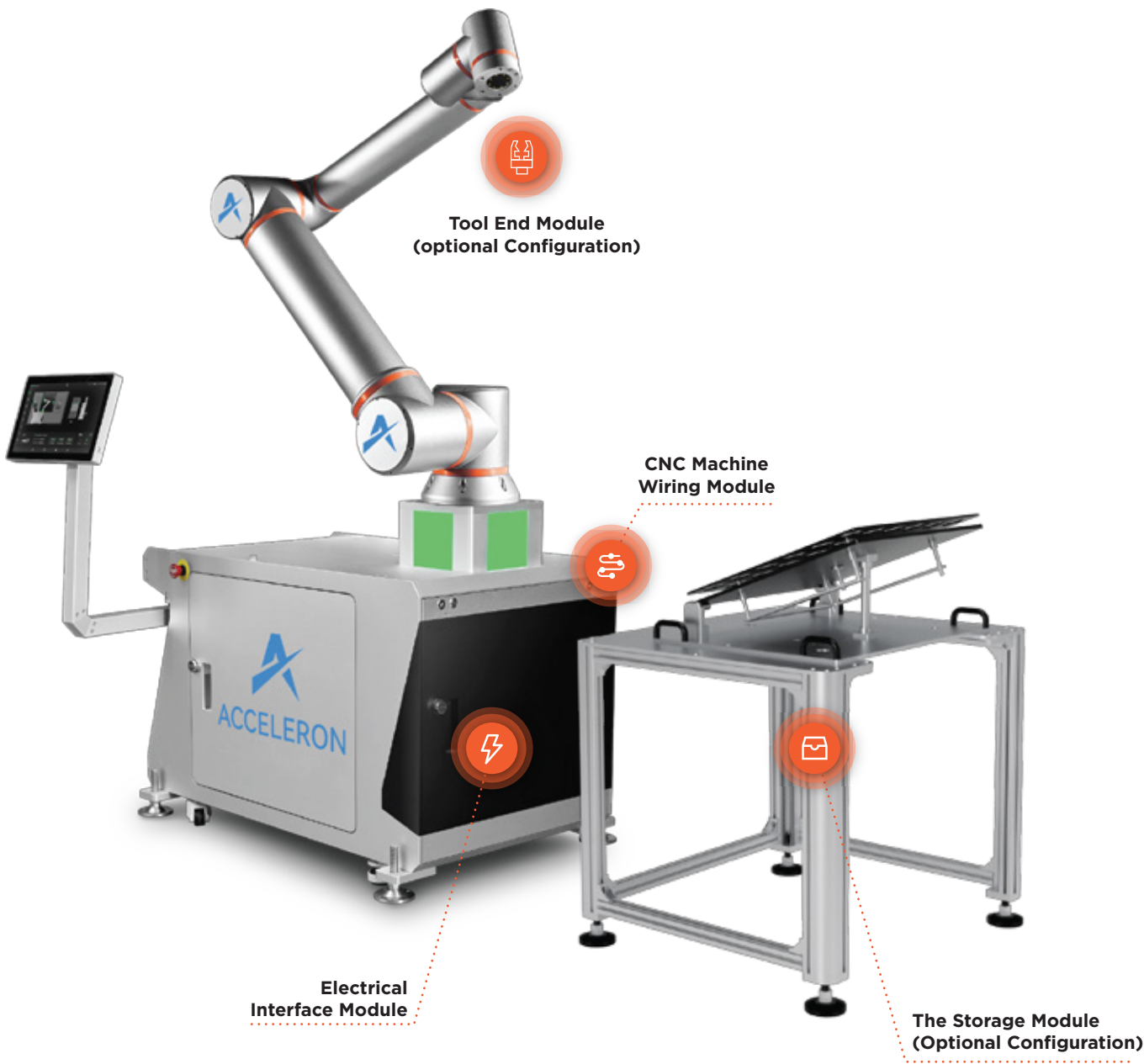
ACCELERON Machine Tending Robot

Acceleron Machine Tending Robot is compatible with various types of CNC milling machines with three, four, or five axes, as well as various lathes, EDM machines, and CMM machines.



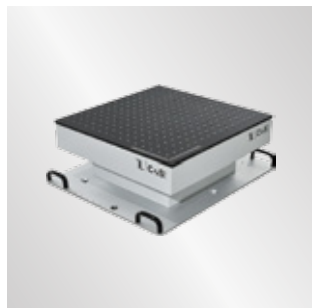
Safe & Reliable

CE certificationSafe human-machine collaboration



Wide Applicability

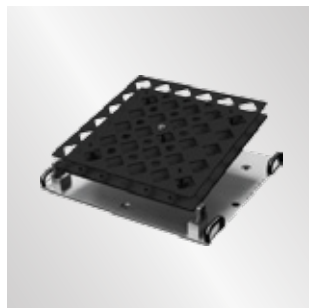
Modular design; Multiple dockers; Meet the processing needs of different part shapes



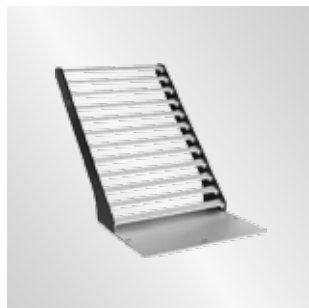
Gotron



Zerotron



Chesstron



Laddertron

Supporting A Wide Range of Applications

Compatible with different brands and types of production equipments



ACCELERON
Machine Tending Robot 20

ACCELERON
Machine Tending Robot 30

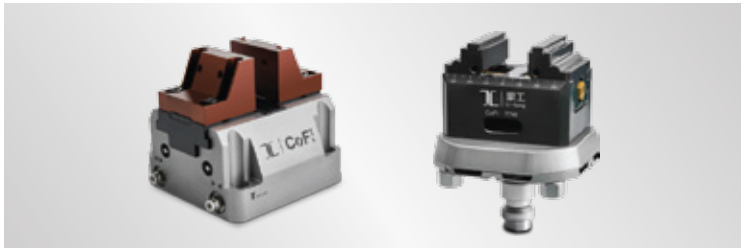
Complete

Clamping Solutuion

Providing workpiece clamping products and robots' end-of-arm tooling. Non-standard custom clamping design services are also offered to meet special process requirements.



End-of-arm Tooling for Robots



In-machine Tooling and Clamping System



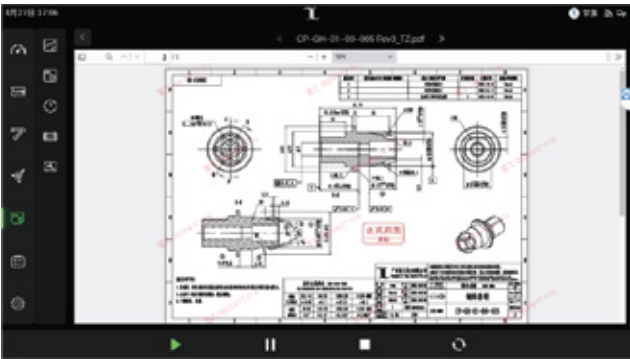
Real-time Reporting

Real-time collection and aggregation of production data for visualized data management

Easy

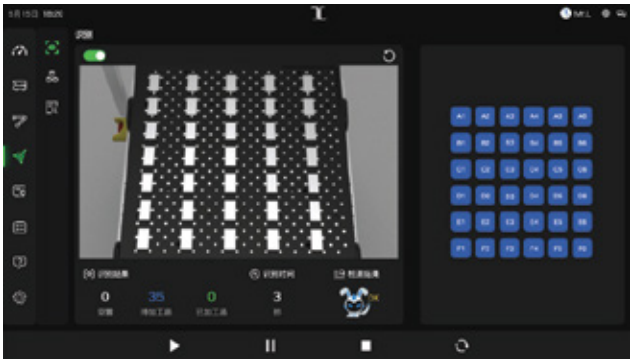
XOS Operating System

Graphical interaction for easy entry-level operation; Input product information and start production with one click



Drawing and Process Viewing

Drawings and process files can be check online through the XOS human-machine control system



Ai Capability

Utilizes computer vision, deep learning, various optimization algorithms, and model libraries for workpiece and process recognition and management



Efficient

1min

Product Changeover

15mins

Redeploy

120mins

Training



Fast Deployment

Finish deployment and training on-site within 2 days



Quick Response

Remote technical support, efficient operation and maintenance



ENGINEERED FOR YOUR SUCCESS



PRECISION
ENGINEERING TECHNOLOGIES
A Group Company of Phillips Machine Tools

Precision Engineering Technologies India Private Limited
Building no. 126, Hi-Tech Defense & Aerospace Park,
Jalahobli, Bangalore - 560061, Karnataka, India.
support.in@petech.in | www.petechglobal.com